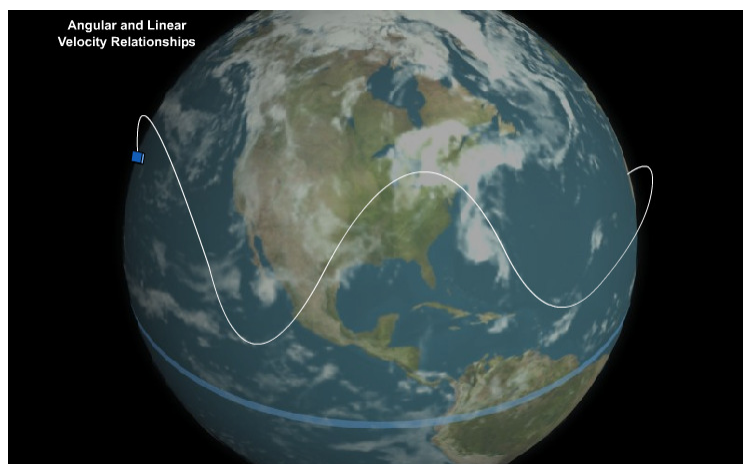


Rossby waves

Rossby wave



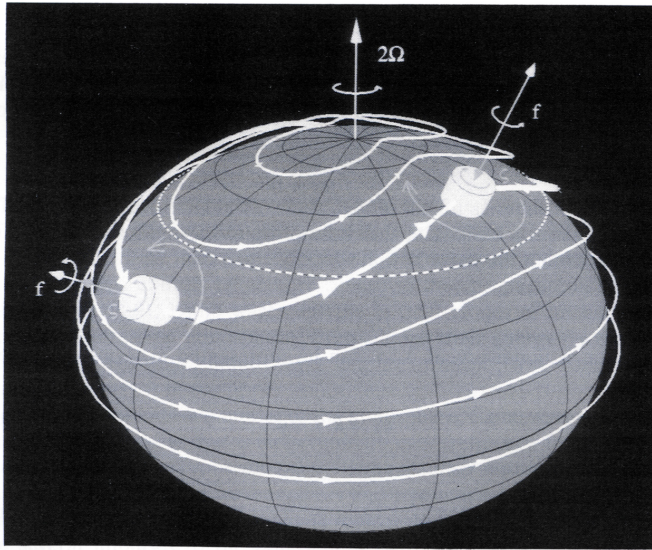
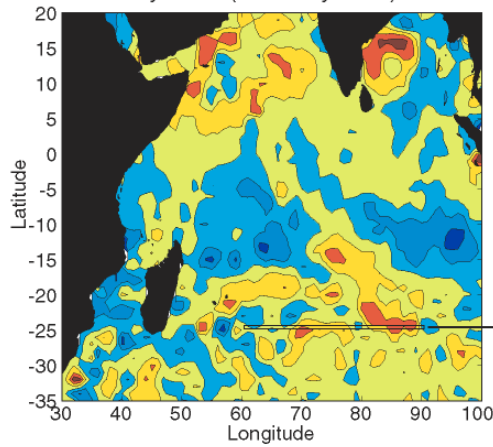


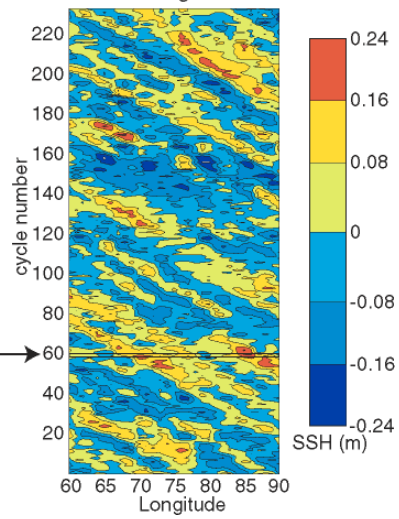
Figure 14.16 Schematic illustrating the reaction of an air parcel to meridional displacement. Displaced equatorward, an eastward-moving parcel spins up cyclonically to conserve absolute vorticity. Northward motion induced ahead of it then deflects the parcel's trajectory poleward back toward its undisturbed latitude. The reverse process occurs when the parcel overshoots and is displaced poleward of its undisturbed latitude.

Rossby waves (ocean)

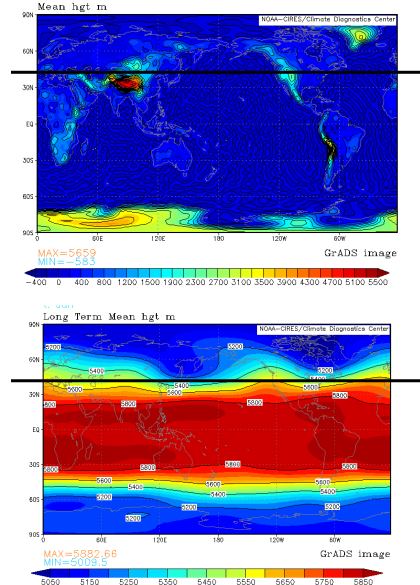
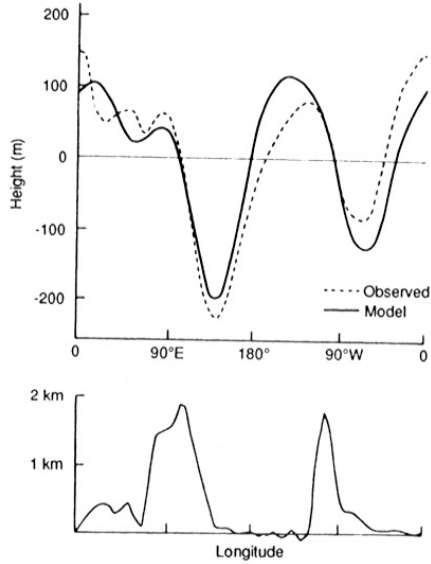
Sea Surface Height from TOPEX/POSEIDON
cycle 60 (1-11 May 1994)



Hovmöller diagram at 25°S



Stationary Rossby waves



Holton Fig. 7.15